

Fri 26<sup>th</sup> June 2015

**Like water  
for chocolate**

**Mexico, 2005, subtitled,  
109 mins, cert 15**

A sumptuous tale from Mexico in the magical-realist tradition. Mouth-watering food, romantic drama, and a glorious operatic score provide temptations for all the senses!



Weds 29<sup>th</sup> July 2015

**Pauline at the beach**

**France, 1983, subtitled,  
95 mins, cert 15**

Pauline and her cousin go to the Atlantic coast for an autumn holiday. Soon their holiday romances take complex turns in one of Eric Rohmer's finest tales.

*"a film of devastating irony and deep compassion."* – Chicago Reader

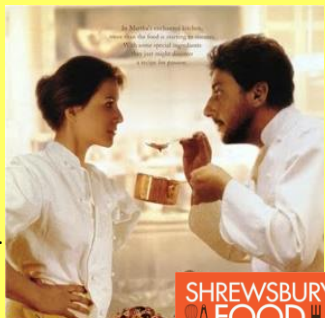


Sat 27<sup>th</sup> June 2015

**Mostly Martha**

**Germany, 2003, subtitled,  
102 mins, cert 15**

A German romantic comedy drama pits a perfectionist local chef against a more relaxed Italian. Soon the professional and personal lives are intertwined...



Mon 29<sup>th</sup> June 2015

**The blossoming of  
Maximo Oliveros**

**Philippines, 2005, subtitled,  
100 mins, cert 15**

A Filipino coming-of-age film about a gay teen who is torn between his love for a young policeman and his loyalty to his family.



Weds 15<sup>th</sup> July 2015

**Keltoum's daughter**

**France/Tunisia, 2005,  
subtitled, 101 mins, cert 12**

Rallia, a young westernized woman, returns to her home village in the mountains of Algeria. Her quest for her past soon reveals family secrets and political conflicts.



Tickets: **£5 on the door** or **£5.50 in advance**.  
All films start at 8pm; bar open from 7:30pm

All films are shown at:  
The Hive music and media centre  
5, Belmont, Shrewsbury SY1 1TE, 01743 234970

For further details see:  
[www.hiveonline.org.uk/shrewsburyfilmsociety](http://www.hiveonline.org.uk/shrewsburyfilmsociety)  
or email: [shrewsburyfilmsociety@gmail.com](mailto:shrewsburyfilmsociety@gmail.com)

Shrewsbury Film Society is a not-for-profit organisation run by volunteers. Our income goes to booking films, venue hire, and developing the society. SFS started in 2011 and now shows films for 11 months each year. For full details, please visit our website.



This season is supported by Film Hub North West Central, proud to be part of the BFI Film Audience Network.



# CINEMA

## at The Hive



**Shrewsbury Film Society**

World cinema  
and classic films

**April – July 2015**